

Kirkbride Way



Larger style, four bedrooms, two ensuite property

Built by Taylor Wimpey to this popular design

Wrap-around front and side gardens, m rear garden, drive and garage

18ft lounge, dining room and separate kitchen/diner

Available with 'no forward chain'

£269,499

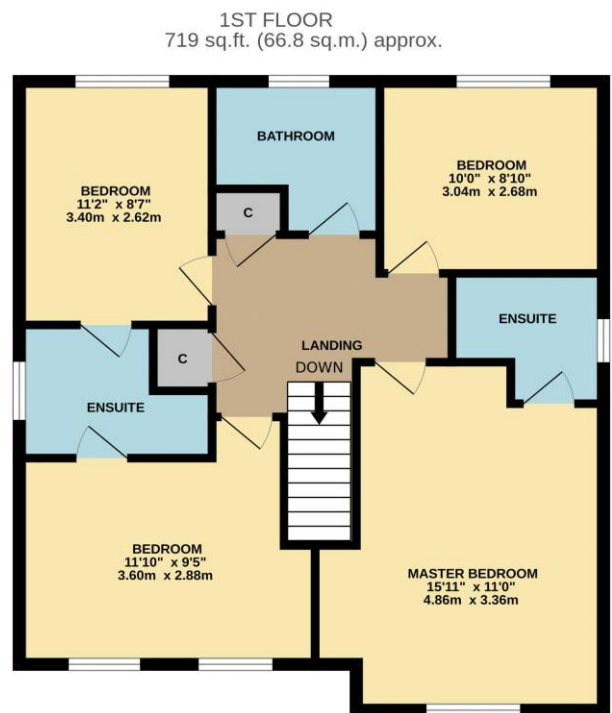
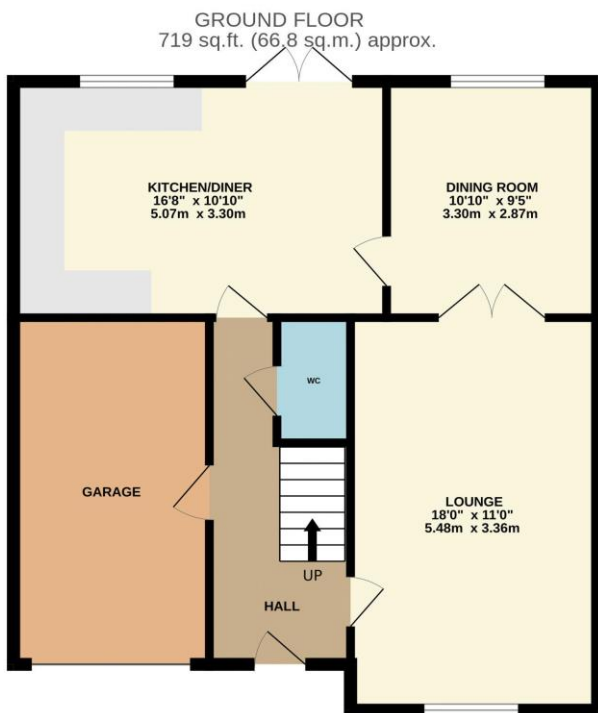


Multi-Award Wining



This larger style, four bedroom and two ensuite family property is available with 'no forward chain'. Built by Talyor Wimpey to this especially popular design, whilst occupying a surprisingly generous plot, boasting a double width front drive, integral garage, wrap-around front and side gardens which are enclosed in an attractive wrought-iron fence, and a fully enclosed rear garden which enjoys a sunny, south-westerly aspect.

Internally, the spacious accommodation briefly comprises an entrance hall, cloakroom/WC, 18ft living room, separate rear dining room and adjoining open-plan kitchen/diner to the ground floor. The first floor delivers four great bedrooms, 'Master' with ensuite, and additional 'Jack & Jill' ensuite that benefits bedrooms two and three. Separate family bathroom. Call Ingleby Homes on 01642 671025 to view.



TOTAL FLOOR AREA : 1438 sq.ft. (133.6 sq.m.) approx.

Whilst every attempt has been made to ensure the accuracy of the floorplan contained here, measurements of doors, windows, rooms and any other items are approximate and no responsibility is taken for any error, omission or mis-statement. This plan is for illustrative purposes only and should be used as such by any prospective purchaser. The services, systems and appliances shown have not been tested and no guarantee as to their operability or efficiency can be given.

Made with Metropix ©2024

"The Ingleby Barwick Experts"





Tenure: Freehold

Council Tax Band: E

EPC Rating: C



AGENTS NOTE: Every care has been taken with the preparation of these details, but they are for general guidance only. Measurements and dimensions are approximate, and any fixtures or fittings shown in photography does not infer that they are to be included within the sale. The agent has not tested any appliances or supplies and professional verification of these should be sought prior to purchase if required. These particulars do not constitute a contract or part of a contract.